



NEWINGTON
LONDON

2 Bedrooms

Apartment

Located in London

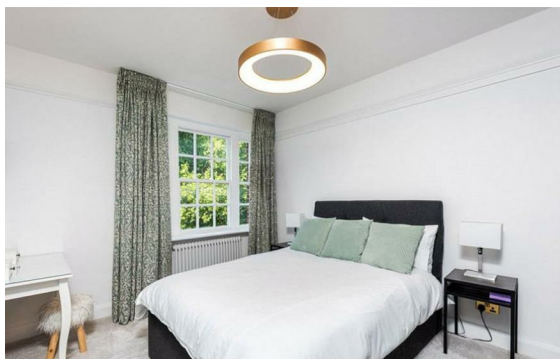
£950 Per Month



info@newingtonstates.com

<http://www.newingtonstates.com>

020 7724 2233



A well-presented two-bedroom apartment set within a well-managed portered building. The property offers a generous reception room, a large principal bedroom, a further double bedroom, a fully fitted kitchen, and a family bathroom. Located on the fourth floor with lift access, the apartment benefits from communal heating and hot water, as well as a 24-hour concierge service.

Ideally positioned close to the open spaces of Regent's Park and within easy reach of both Marylebone and Baker Street Underground stations.

EPC rating: C

Energy Efficiency Rating: C

Agents Note: Whilst every care has been taken to prepare these particulars, they are for guidance purposes only. All measurements are approximate and are for general guidance purposes only and whilst every care has been taken to ensure their accuracy, they should not be relied upon and potential buyers/tenants are advised to recheck the measurements.

NEWINGTON LONDON

60 Upper Montagu Street

London

W1H 1SN

020 7724 2233

info@newingtonstates.com

<http://www.newingtonstates.com>